



Model XB-4.7

Right-Angle 6mm male threaded
 “Quick Fit” Antenna Mounting Base
 with 4.7 metres RG58 cable fitted.
 No cable to device connector
 supplied, order requirements
 separately

Mounts into any bracket with
 minimum 16mm diameter hole.

INSTALLATION GUIDE

www.zcg.com.au

DESCRIPTION

The XB-4.7 right-angle 6mm male mount threaded base and cable set is suitable for mounting these ZCG whips:

- M90T-nextG Lower 4G cellular whip 825-890 MHz
- M90T-GSM Lower 4G cellular / ISM900 whip 890-960 MHz
- M70T All networks 4G LTE cellular whip 703-748 MHz

4.7 metres of RG58 low loss solid core coaxial cable is fitted to the base. No cable to device connector is supplied, choose suitable connector for your device.

The XB base (6mm male threaded) can be mounted into any bracket with minimum 16mm diameter hole.

SELECTING THE MOUNTING POSITION

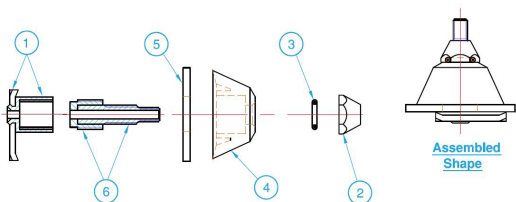
To achieve best performance from your antenna, these are the important principles you should consider when selecting the mounting point:

1. **Mount the antenna in as high a place as possible.**
2. **Mount the antenna as far away from other antennas and metallic objects as possible to avoid interference and distortion of the 360° omnidirectional pattern. At least 350 mm side clearance is desirable, preferably more.**
3. **Mount the antenna properly vertical, not at an angle.**

INSTALLATION GUIDE

1. Remove the top locking nut (2) from the XB mount base.
2. Remove the O-ring (3), plastic housing (4) and rubber gasket (5) from the XB base. **DO NOT remove/undo the brass centre mounting thread (6) from the earthing base (1).**
3. Insert the brass 6mm mount thread (6) and earthing base (1) through your minimum 16mm hole. The earthing base should contact around your 16mm hole (ensure clear from debris for adequate connectivity)
4. Replace the rubber gasket (5) + angled plastic housing (4) + O-ring (3) and locking nut (2) onto your brass mount thread.
5. Screw the locking nut (2) until the base is adequately secured into your installation location (no movement).

IMPORTANT : Do not over-tighten the locking nut on the brass mount thread. This may cause cross-threaded/striped threads and will make removal of the XB-4.7 quite difficult and or difficult fitment of your antenna.



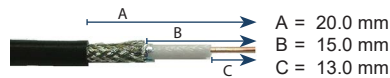
IMPORTANT : Leave some slack in the cable at the point where the cable exits the mounting base so as not to place unnecessary tension on the cable).

Route the RG58 low loss cable carefully. Avoid high heat areas in the engine bay or locations of high electrical interference such as fuse boxes or electric fans. Ensure that the cable is not stretched excessively and there are no sharp kinks. Use cable ties, but do not pull so tight as to crush the cable. A damaged feeder cable is a cause of high VSWR and reduced performance.

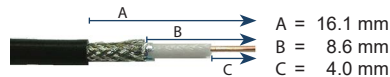
We recommend that you cut the cable to the shortest length necessary, prior to fitting your specific connector (ordered separately).

We have included some of the most common connectors requested with the XB-4.7 base

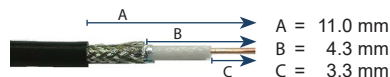
UHF Male PL259 - SKU: 7900



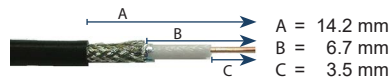
BNC Male - SKU: 7965



SMA Male - SKU: 7963-7



N-type Male - SKU: 7933-2



Attach the connector to your device.

Installation is now complete.